



pm cut70™ | pm cut105™
Plasma Inverter and Accessories



Contents

Plasma Inverter pm cut70TM pm cut105TM	6
Plasma Cutting Torches Hand PM-105 with PM-FIT	7
Plasma Cutting Torches Machine PM-105 with PM-FIT	9
Accessoires pm cut105TM	11

Plasma Inverter

SCOPE OF DELIVERY:

- Plasma Inverter
- Plasma Cutting Torch PM105, 6m, with PM-FIT
- Torch cable 25 qmm, 6m
- CNC-interface



YOUR ADVANTAGES:

- high cutting speed with good quality
- easy change of the Torch Head with PM-FIT
- Innovative PM-FIT Torch
- Flexible Multiple torch configuration
- without HF-Ignition
- High cutting performance

EXAMPLE 1: Cutting a 25 mm thick plate
pm cut70TM: 70A 12 cm 1 min

EXAMPLE 2: Cutting a 45 mm thick plate
pm cut105TM: 105A 13 cm 1 min



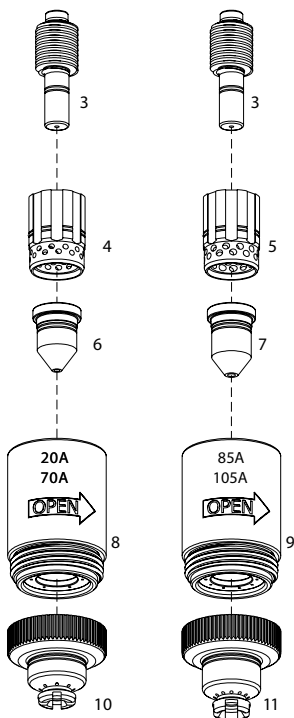
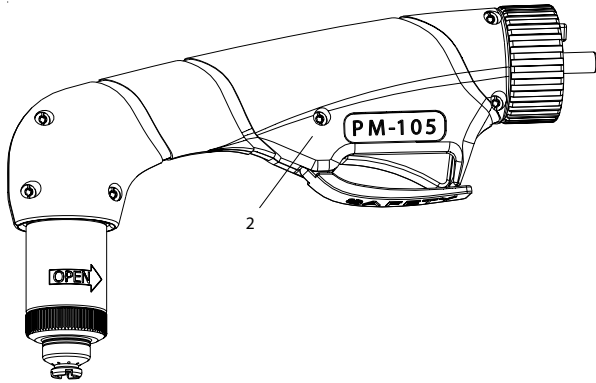
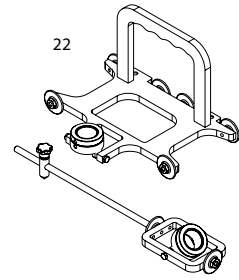
pm cut70TM | pm cut105TM

Technical Data	pm cut70™	pm cut105™
Order Number	13-000070-01	13-000105-01
Rated input voltage (V)	3x400 V +/-15%, 50/60Hz	3x400 V +/-15%, 50/60Hz
Rated input current (A)	15,9	38,2
Rated input power (KW)	10	19,9
Cutting current adjustment range (A)	20-70	20-105
Pilot current (A)	20	20
No-load voltage (V)	298	300
Duty Cycle (40°C/10 minutes)	100% 70A 135V	100% 105A 160V
Max. cutting thickness to Carbon steel	38 mm	52 mm
Optimal cutting thickness to Carbon steel	≤35 mm	≤43 mm
Optimal cutting thickness to Stainless steel	≤28 mm	≤35 mm
Optimal cutting thickness to Aluminium	≤20 mm	≤30 mm
Optimal cutting thickness to Cuprum	≤12 mm	≤25 mm
Dimensions (mm)	530x248x430	635x295x500
Weight	29,5 kg	37 kg
Protection class / Insulation class / Cooling method	IP23S / F / Air	IP23S / F / Air

Plasma Cutting Torches Hand



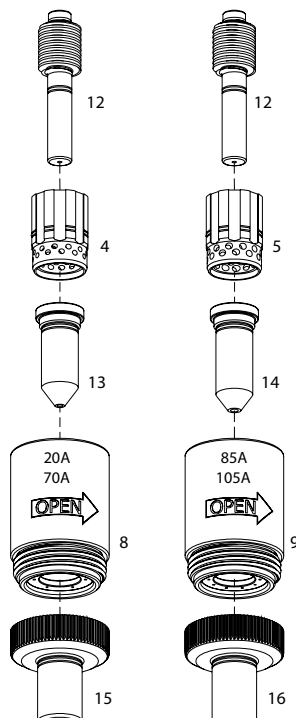
Bevel Tool
Patent pending



20-70A

85-105A

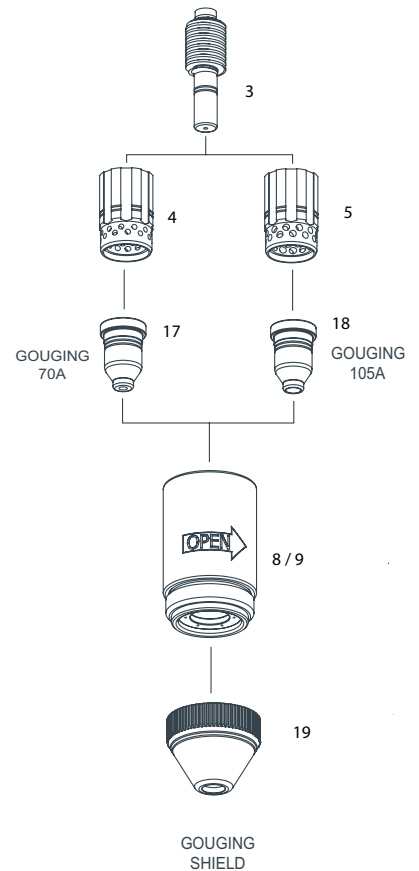
Contact



20-70A

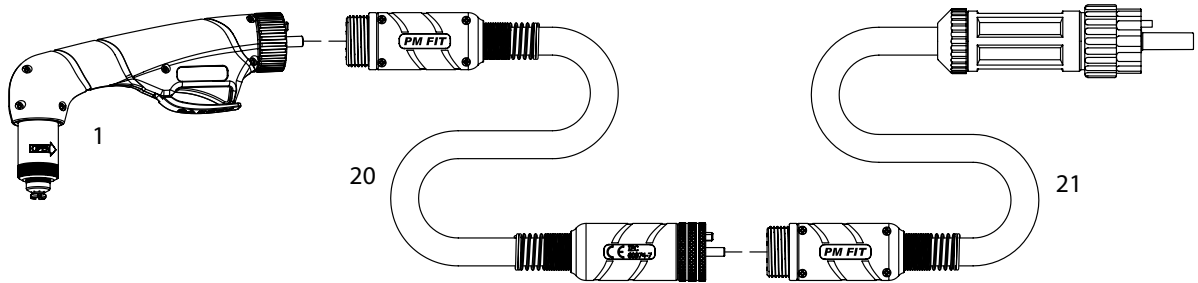
85-105A

Extended Contact



PM-105 with PM-FIT

Technical Data	
Max. current	20 - 105 Ampere
Duty Cycle	60 % - 105 Ampere
Gas	Luft / N2 / air / N2
Gas pressure	Cutting: 5,0 - 5,5 bar (72 - 80 psi) Gouging: 3,5 - 4,5 bar (50 - 65 psi)
Gas flow	240 ltr. / min. (510 scfh)
Post flow time	45 s
Pilot	Electrode to tip
Ignition	without HF



PM-105 75°
70A

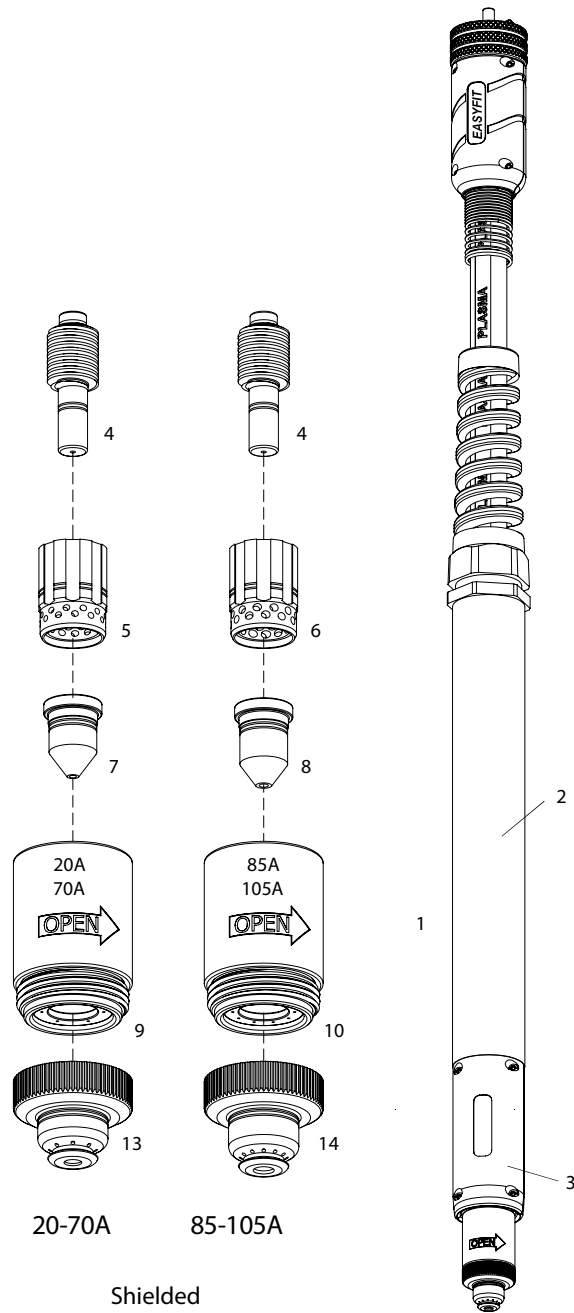
● Standard Layout

PM-105 75°
105A

● Standard Layout

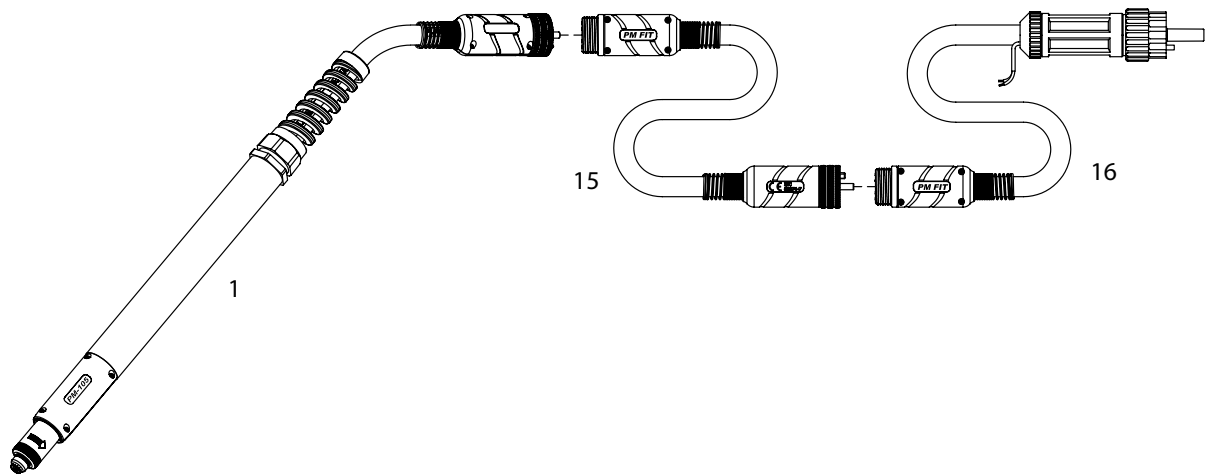
Item	Order No.	Layout	Description	Pkg Qty	Euro per piece
1	13-000100-02	●	Hand Torch Head, PM-FIT PM-105 75°, Spare parts 70A	1 piece	
	13-000100-01	●	Hand Torch Head, PM-FIT PM-105 75° Spare parts 105A	1 piece	
	13-000101-01		Hand Torch Head, PM-FIT PM105 15°	1 piece	
2	13-000106-01		Handgrip with Microswitch cpl.	1 piece	
3	13-001000-01	● ●	Electrode, 20-105A	5 pieces	
4	13-002000-70	●	Swirl Ring, 20- 70A Maximum Life	2 pieces	
5	13-002000-105		Swirl Ring, 85-105A Maximum Life	2 pieces	
6	13-003000-50		Tip, Contact Cutting, 20-50A	10 pieces	
	13-003000-70	●	Tip, Contact Cutting, 70A	10 pieces	
7	13-003000-85		Tip, Contact Cutting, 85A	10 pieces	
	13-003000-105	●	Tip, Contact Cutting, 105A	10 pieces	
8	13-004000-70	●	Shield Cup Body, 20- 70A Maximum Life	1 piece	
9	13-004000-105	●	Shield Cup Body, 85-105A Maximum Life	1 piece	
10	13-005000-70	●	Shield Cap, 20- 70A Hand	3 pieces	
11	13-005000-105	●	Shield Cap, 85-105A Hand	3 pieces	
12	13-001500-01		Extended Electrode, 20-105A	5 pieces	
13	13-003500-50		Extended Shielded Tip, Contact Cutting, 20-50A	5 pieces	
	13-003500-70		Extended Shielded Tip, Contact Cutting, 70A	5 pieces	
14	13-003500-85		Extended Shielded Tip, Contact Cutting, 85A	5 pieces	
	13-003500-105		Extended Shielded Tip, Contact Cutting, 105A	5 pieces	
15	13-005500-70		Extended Shield Cap 20- 70A, Hand	2 pieces	
16	13-005500-105		Extended Shield Cap 85-105A, Hand	2 pieces	
17	13-003000-70G		Tip , Gouging, 70A	10 pieces	
18	13-003000-105G		Tip , Gouging, 105A	10 pieces	
19	13-005000-01G		Shield Cap Gouging	3 pieces	
20	13-000400-06		Extension 6m, PM-FIT	1 piece	
21	13-000300-06		Torch cable 6m, PM-FIT-Euro ZA	1 piece	
22	05-4051880		BEVEL TOOL	1 piece	
	05-001700-01		Circle Cutting Attachment	1 piece	
	05-001701-01		Cutting Guide	1 piece	

Plasma Cutting Torches Machine



PM-105 with PM-FIT

Technical Data	
Max. current	20 - 105 Ampere
Duty Cycle	60 % - 105 Ampere
Gas	Luft / N2 / air / N2
Gas pressure	Cutting: 5,0 - 5,5 bar (72 - 80 psi) Gouging: 3,5 - 4,5 bar (50 - 65 psi)
Gas flow	240 ltr. / min. (510 scfh)
Post flow time	45 s
Pilot	Electrode to tip
Ignition	without HF



PM-105 75°
70A

● Standard Layout

PM-105 75°
105A

● Standard Layout

Item	Order No.	Layout	Description	Pkg Qty	Euro per piece
	13-000020-08		Machine torch 8m ZA (without illustration)	1 piece	
1	13-000200-02	●	Machine Torch Head, PM-FIT PM-105 75°, Spare parts 70A	1 piece	
	13-000200-01	●	Machine Torch Head, PM-FIT PM-105 180 ° Spare parts 105A	1 piece	
2	13-000220-01	● ●	Fiberglas Positioning Tube	1 piece	
3	13-000221-01		Machine Torch Head, PM-FIT	1 piece	
4	13-001000-01	● ●	Electrode. 20-105A	5 pieces	
5	13-002000-70	●	Swirl Ring, 20- 70A Maximum Life	2 pieces	
6	13-002000-105	●	Swirl Ring, 85-105A Maximum Life	2 pieces	
7	13-003000-50		Tip, Contact Cutting, 20-50A	10 pieces	
	13-003000-70	●	Tip, Contact Cutting, 70A	10 pieces	
8	13-003000-85		Tip, Contact Cutting, 85A	10 pieces	
	13-003000-105	●	Tip, Contact Cutting, 105A	10 pieces	
9	13-004000-70	●	Shield Cup Body, 20- 70A Maximum Life	1 piece	
10	13-004000-105	●	Shield Cup Body, 85-105A Maximum Life	1 piece	
13	13-006000-70	●	Shield Cap, 20- 70A Maschine	2 pieces	
14	13-006000-105	●	Shield Cap, 85-105A Maschine	2 pieces	
15	13-000400-06		Extension 6m, PM-FIT	1 piece	
16	13-000250-06		Torch cable 6m, PM-FIT-Euro ZA	1 piece	

Accessoires pm cut105TM



Order No.	Description	Euro per piece
05-001700-01	Circle Cutting Attachment	



Order No.	Description	Euro per piece
05-00050500	Air Filter	



Order No.	Description	Euro per piece
05-4051880	Bevel Tool	






Order No.	Description	Euro per piece
13-009000-01	pm cut Trolley	



Order No.	Description	Euro per piece
13-000103-01	Hand Torch Head length	



Telefon +49 54 94 - 98 74 - 0
info@pm-schweisstechnik.de
www.pm-schweisstechnik.de

 pmschweisstechnik
 P+M Schweisstechnik Vertriebs GmbH
 P+M Schweisstechnik Vertriebs GmbH

pm
P+M Schweißtechnik